

27WON

27W-6-173 11th Gen Civic RMM Installation

Written By: Ian Chen



INTRODUCTION

In this installation guide we have provided step by step instructions to remove the OE motor mount and install the 27WON performance rear motor mount.

Advisory:

Working under the vehicle requires a safe and sturdy location for the vehicle to sit on jackstands.

The engine bay will be hot after recent vehicle operation. Allow the vehicle to cool or use a fan to cool the engine bay before working on the vehicle.

TOOLS:

- [Hydraulic Jack](#) (1)
 - [Jack Stand](#) (2)
 - [17mm Socket - Shallow](#) (1)
 - [19mm Socket - Shallow](#) (1)
 - [3 8" Short extension](#) (1)
 - [3/8" Ratchet](#) (1)
 - [Torque Wrench \(3/8" Drive\)](#) (1)
 - [Flat Head Screwdriver - Large](#) (1)
 - [Phillips Screwdriver](#) (1)
-

Step 1 — Getting Started



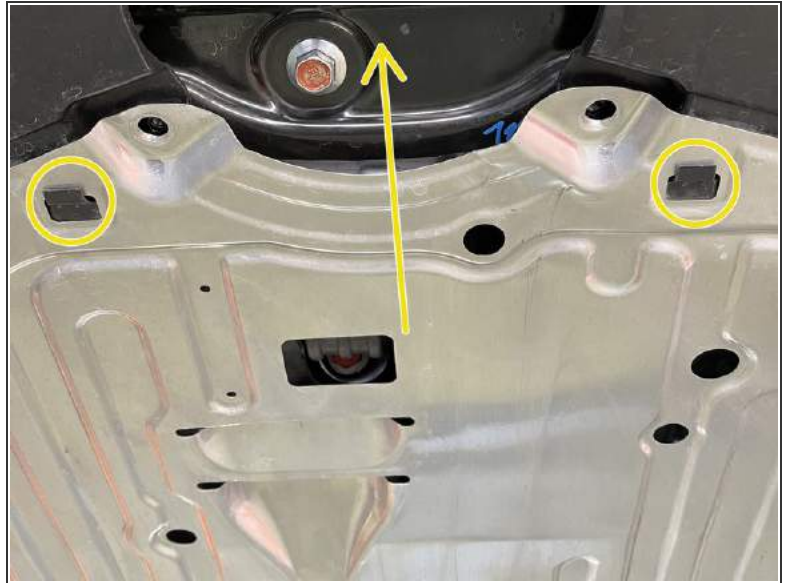
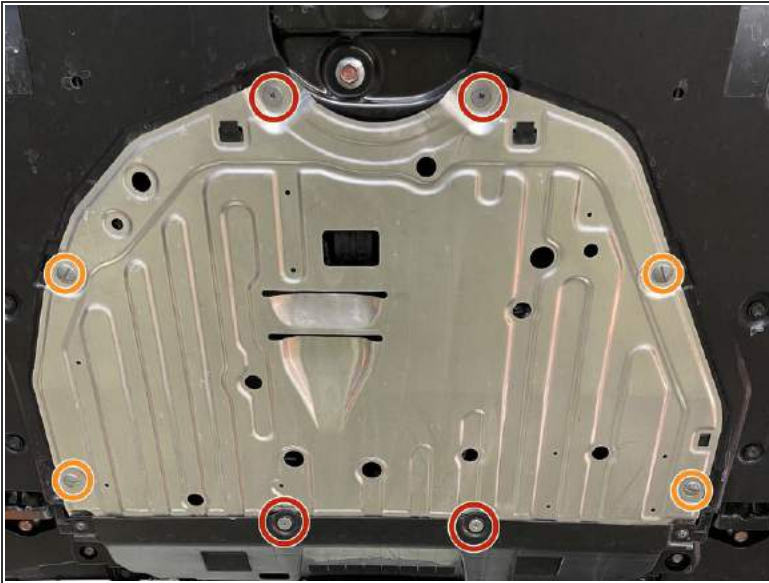
- First and foremost; **THANK YOU** for becoming a part of the 27WON Family. We hope to **REDEFINE** your experience of the aftermarket with the highest level Parts, Customer Service, Packaging, & Support
- Install was performed on a 2022 Civic EX. Installation on other models may vary

Step 2 — 27WON RMM Introduction



- i** Hello and welcome to the 27WON Rear Motor Mount install guide.
- i** Noise, Vibration, & Harshness is an evaluation of the various irritants that can be transmitted through the vehicle into the cabin and directly to the driver and passengers. Not all NVH is created equal, an OE designer may consider turbo noise to be unwanted NVH, whereas a performance enthusiast may consider it a desired sound
- i** With the addition of a 27WON performance engine mount, increased NVH will be an inherent part of the upgrade
- i** While we do our absolute best to deliver a mount that works great and feels amazing some customers may find the higher levels of NVH to be too great. It is our guarantee that 100% of customers will love this mount. If for any reason you have any concerns with the mount simply reach out to us and our team will take care of any issues for you

Step 3 — Remove Skidtray



- Locate the skidtray
- Use a Philips head screwdriver to remove four (4) screws
- Use a flat head screwdriver to remove four (4) half-turn screws
- Gently hold the skidtray up a little bit and move it toward the rear of the car to remove the skidtray

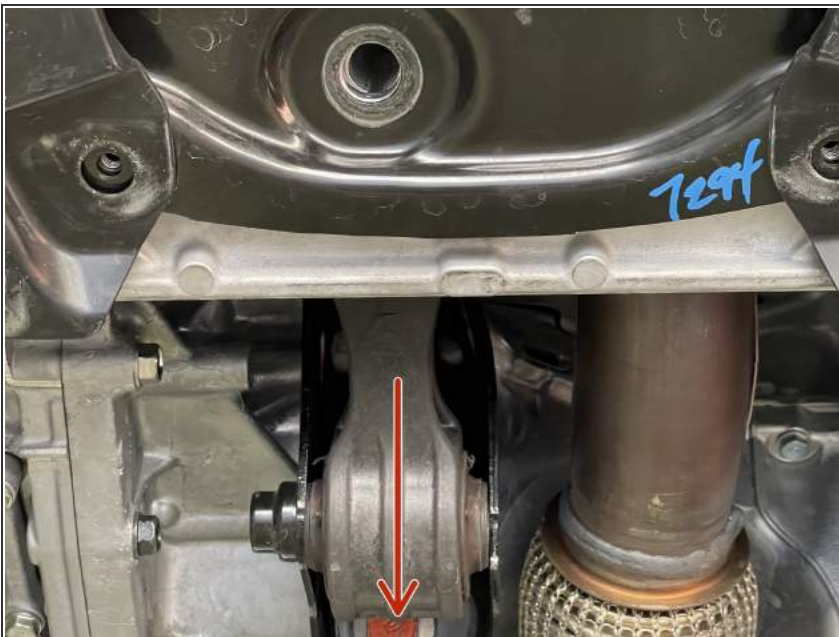
Step 4 — Unbolt OE Rear Motor Mount



- Locate the front and rear bolts for OE rear motor mount
- Grab a 3/8" ratchet, extension and a 19mm socket to remove front bolt
 - ⓘ Use one hand to lift the frontpipe when removing the front bolt
- Use the same 3/8" ratchet and a 17mm socket to remove the rear bolt as shown

⚠ Front and rear bolts different lengths so make sure you don't mix them up

Step 5 — Remove OE Rear Motor Mount



- Pull the motor mount down a little bit and slide the OE Motor Mount toward the front to take it out

Step 6 — Get to Know The 27WON RMM



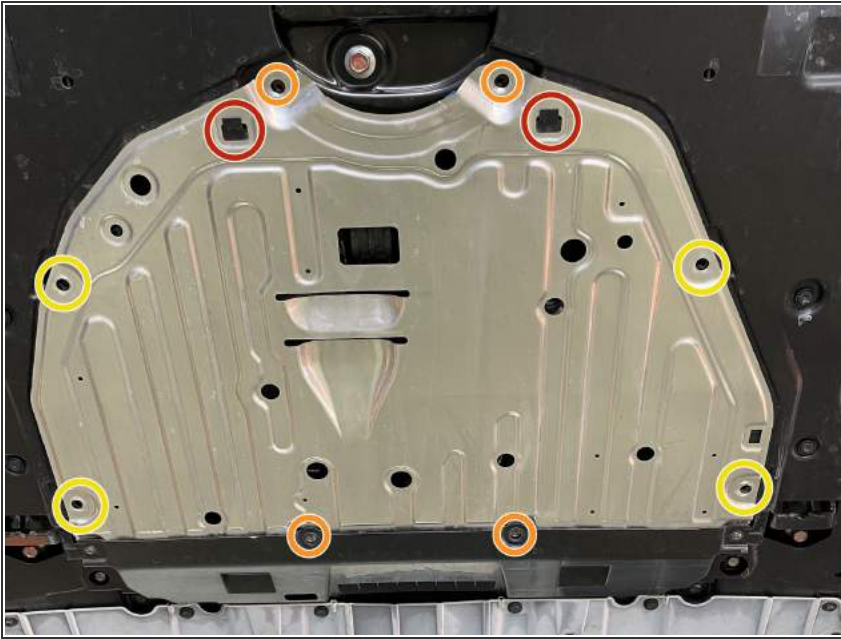
- ❗ The 27WON RMM was design to be installed in one orientation. Please review before proceeding to the 27WON RMM installation
- **Chassis End** - This side of the RMM will be mounted to the chassis sub-frame
- **Engine End** - This side of the RMM will be mounted to the engine mounting bracket
- **Engraved W Logo** - This logo should face the exhaust front-pipe of the vehicle when installed

Step 7 — Install 27WON RMM



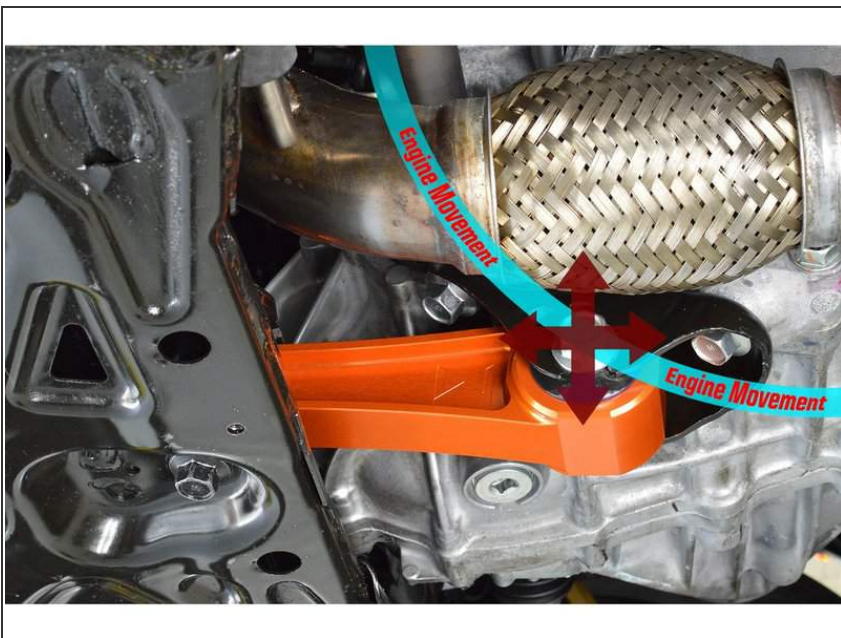
- Gently slide the rear end of 27WON RMM into the bracket as shown
- ⚠ Make sure that the "REDEFINE" text is facing the passenger's side
- ⓘ You should not need to force the RMM in
- Reinstall the front bolt by hand for a couple threads
- Reinstall rear bolt by hand for a couple threads
- Snug both bolts
- Torque front bolt to 50lb-ft
- Torque rear bolt to 65lb-ft

Step 8 — Reinstall Skidtray



- Slide the skidtray back on the car
- Make sure skidtray is on the two clips in the rear
- Reinstall the four (4) Philips head screws back on
- Reinstall the four (4) Flat head screws back on

Step 9 — What to Expect from Your RMM




- ⓘ A performance rear motor mount by design reduces engine movement to mitigate unwanted wheel hop, slow throttle response, and torque steer - the by-product of this is increased NVH (Noise, Vibration, Harshness) that is transmitted to the vehicle cabin

-
- ① Like most performance modifications, understanding the changes to the vehicle caused by

the modification is critical. In these instructions we want to advise you on the expected changes :

- Polyurethane has a "break-in" period, we advise that you drive with the RMM for a couple weeks to let the RMM poly settle in. We are confident that you will love the new performance benefits
- Increased vibration to the vehicle cabin is to be expected, there are some driving habit changes that will reduce the added vibration: try not to "lug" the engine at low RPM. High engine load (hard throttle) at low RPM may exaggerate the vibration
- The temperature of the poly will affect its stiffness, cold mornings may transmit more vibration. This will disappear as the polyurethane warms up with the engine heat

 *We want every customer totally satisfied with our RMM. Your personal satisfaction with the 27WON RMM is very important to us. If you have questions or concerns please give us a call at 571-271-0271.*

Step 10 — I Dare You to REDEFINE



- This completes the installation of your 27WON Performance Rear Motor Mount
- We hope you were impressed with your 27WON experience and love your new RMM for years to come. Email us at sales@27won.com or call us at 571-271-0271 with any questions or concerns
- Please leave a review here: <https://store.27won.com/honda-civic-rear...>
- Share your experience using #27WON on Instagram and Facebook